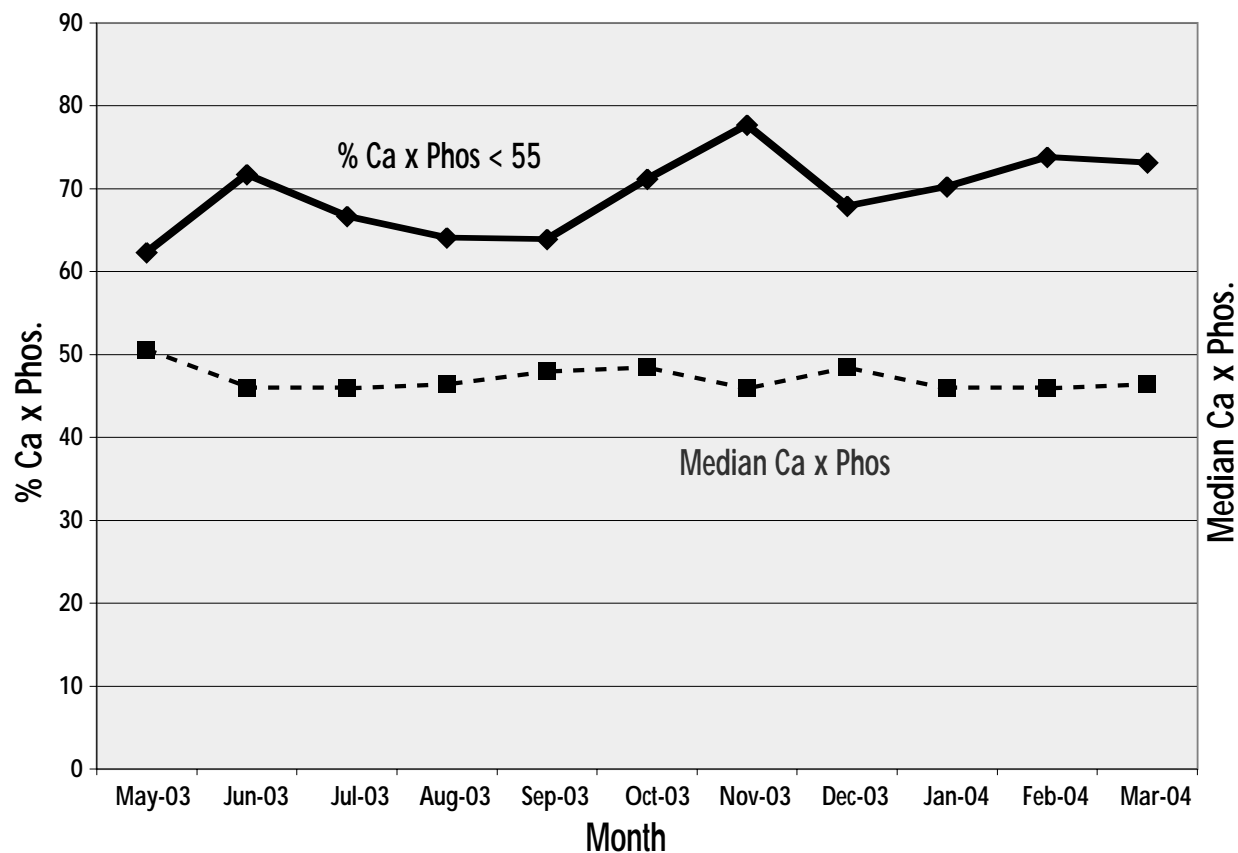


Guiding Vitamin D Therapy with the 1-84 PTH/7-84 PTH Ratio Resulted in >70% Compliance with Calcium x Phosphate <55

R. Amerling, Beth Israel Medical Center, New York, NY.

The calcium x phosphate product is a significant predictor of mortality in ESRD patients. K/DOQI bone and mineral metabolism guidelines have set a target of <55 for ESRD patients. Achieving this goal remains a challenge. One reason may be that targeting a PTH value of 15-300 pg/ml results in excessive adynamic bone disease. The 1-84 PTH/7-84 PTH ratio has been shown with bone histology to be 94% accurate in identifying ESRD patients with histologically confirmed adynamic bone disease. One year ago we changed from using a specific 1-84 PTH assay to the 1-84 PTH/7-84 PTH ratio to guide vitamin D therapy. We observed an improvement in the calcium x phosphate product so that over 70% of the 150 patients at Irving Place Dialysis Center have calcium x phosphate at <55.



Amerling R. Guiding Vitamin D Therapy with the 1-84 PTH/7-84 PTH Ratio Resulted in >70% Compliance with Calcium x Phosphate <55. *J Am Soc Nephrol* 2004; 15(10):F-PO999, p. 283A.